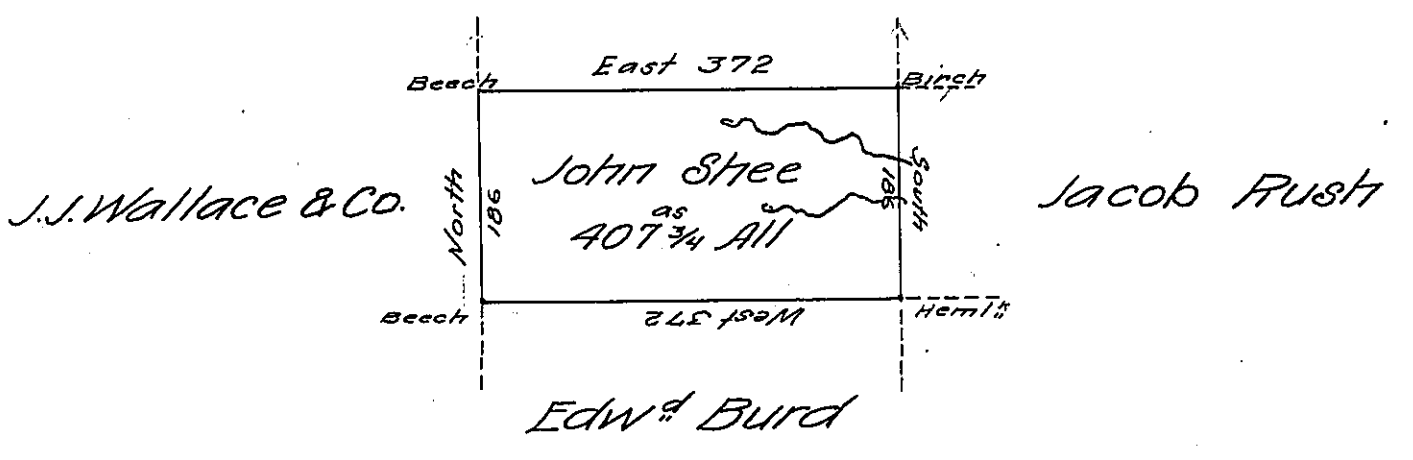


Patrick Byrne



A Draft of a Tract of Land situate adjoining
 Lands of Patrick Byrne & others in Loyalsock
 Township Northumb^d County Survey'd on the
 17th Day of October 1792 for John Shee by
 Virtue of a Warrant bearing Date the 13th Day
 of June 1792 containing four Hundred and
 seven Acres & three Quarters with the Allow-
 ance of Six P Cent for Roads &c.

Jo. J. Wallace D.S.

To Daniel Broadhead Esq }
 Surveyor General

now Lycoming County

IN TESTIMONY that the above is a copy of the original remaining on file in
 the Department of Internal Affairs of Pennsylvania, made
 conformably to an Act of Assembly approved the 16th day of
 February, 1833, I have hereunto set my Hand and caused
 the Seal of said Department to be affixed at Harrisburg,
 this twentieth day of December 1906

Laurel J. Brown
 Secretary of Internal Affairs.